

## **Chairman Alan Greenspan expects natural gas prices to keep running up<sup>1</sup>**

*But Lake Grove Condominium Site Saves \$19,731!*

**Lake Grove — June 2003** — The Lake Grove condominium complex has 124 units and five domestic hot water and heating systems. The systems are combined systems, with one boiler per system. Like most complexes, some of the biggest expenses are for heating hot water for showers, washing, etc. as well as unit temperature control. Gas, electricity and maintenance all contribute to overall cost. The price of energy has risen dramatically. And it is not over. In an article from the Associated Press on June 11, 2003, it was noted that “Natural gas at wholesale has surged to \$6.25 per thousand cubic feet compared to an average of about \$3 last year.” For consumers this translates to \$1.20 per therm versus about \$.60 per therm historically. Federal Reserve chairman Greenspan was quoted as saying: “We are not apt to return to earlier periods of relative abundance and low prices anytime soon.” He added that there was a possibility that the peak price of natural gas on the wholesale market could exceed \$7.50 per thousand cubic feet by next January.

In the case of Lake Grove, the price for gas has risen 11% from the baseline year. According to their gas utility bills, the average cost per therm was \$.56 for the base year of December 1998 through January 1999. For the period of December 2002 through January 2003, the average cost per therm was \$.62. However in that time, the usage of gas was down 23% because an Energy Recon System was installed. Without the solution, gas costs alone would have been more than \$10,000 higher. In addition, they saved \$7,777 on electricity and \$1,500 on deferred maintenance. Their net savings, including the cost of the Energy Recon System was \$14,331. The management looked at other solutions – one didn’t work at all and the other was not a demand based control. They are glad they went with the Pro-Temp Control / Energy Recon System.

1. Investors Business Daily, 6/11/2003,  
[http://story.news.yahoo.com/news?tmpl=story&u=ibd/20030611/bs\\_ibd\\_ibd/2003611general](http://story.news.yahoo.com/news?tmpl=story&u=ibd/20030611/bs_ibd_ibd/2003611general)

### **Energy Recon System Provides Big Benefits**

An Energy Recon System is a state-of-the-art Energy Management System (EMS) consisting of computerized digital hot water control from Pro-Temp Control, modems, sensors, control wiring and power sources for hot water boilers. Sensors and computer systems read water temperature and usage. They tell boiler and pump when each must work or can rest. Software

memorizes peaks and valleys of hot water usage to ensure ample hot water 24/7. Intelligent systems check for out-of-bounds temperatures, gas usage, and water leaks. One the main benefits on an Energy Recon System is the continual monitoring of system performance. By analyzing the output of the system, ETE can ensure that small problems don't get out of control. Other benefits include:

- Utility Savings: Gas savings of up to 40% and electrical savings up to 75%
- Lower Repair Bills: Due to reduced equipment run time
- Water Leak Detection: Hot water leaks will be monitored
- System Performance: Customer is notified if system is running improperly
- Reporting and Monitoring

### **Lake Grove Reports**

#### Summary of Hot Water Budget Savings for Lake Grove

There are five combined boiler / heating systems, with one pump per system. Gas, electricity and maintenance all contribute to overall cost and savings.

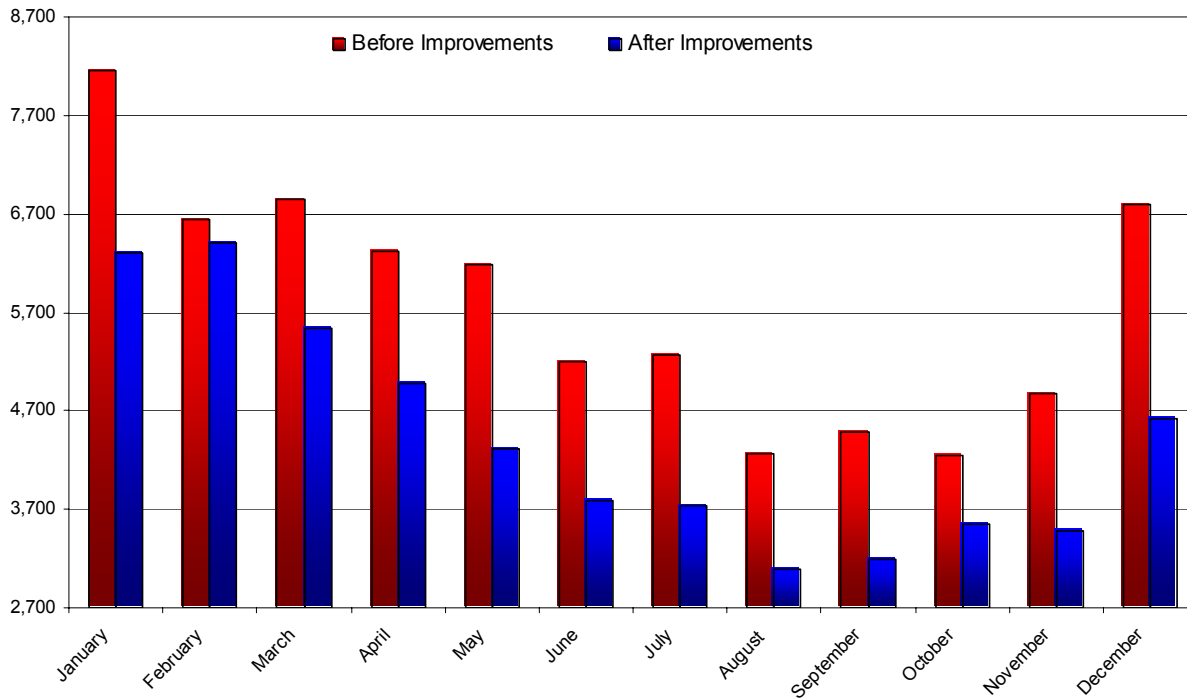
Gas Savings	
12 Months	\$10,454
Electrical Savings	
12 Months	\$7,777
Deferred Maintenance Savings	
12 Months	\$1,500
System Cost	<u>\$5,400</u>
Net Savings	<u>\$14,331</u>
<b>Average Yearly Savings</b>	<b>\$19,731</b>

## Gas Savings – All Systems.

The results are based on utility company information,

Month	<u>Before Improvements</u>			<u>Last 12 Months</u>				<u>Savings</u>			
	Therms	Amount	Therm Cost	Month	Therms	Amount	Therm Cost	%	Therms	Amount	%
01/12/99	8,163	4,513	\$0.55	Jan-03	6,309	\$4,254	\$0.67	22.71%	1,854	27.70%	\$1,250
02/09/99	6,637	3,473	\$0.52	Feb-02	6,413	\$3,596	\$0.56	3.38%	224	3.62%	\$126
03/12/99	6,850	3,461	\$0.51	Mar-02	5,541	\$2,684	\$0.48	19.11%	1,309	18.32%	\$634
04/09/99	6,322	3,113	\$0.49	Apr-02	4,986	\$2,678	\$0.54	21.13%	1,336	23.05%	\$718
05/11/99	6,186	3,067	\$0.50	May-02	4,323	\$2,729	\$0.63	30.12%	1,863	38.35%	\$1,176
06/10/99	5,203	2,975	\$0.57	Jun-02	3,793	\$2,628	\$0.69	27.10%	1,410	32.84%	\$977
07/13/99	5,273	3,157	\$0.60	Jul-02	3,739	\$2,446	\$0.65	29.09%	1,534	31.79%	\$1,004
08/10/99	4,263	2,664	\$0.62	Aug-02	3,092	\$2,104	\$0.68	27.47%	1,171	29.91%	\$797
09/09/99	4,487	2,888	\$0.64	Sep-02	3,185	\$2,116	\$0.66	29.02%	1,302	29.95%	\$865
10/07/99	4,255	2,782	\$0.65	Oct-02	3,547	\$2,384	\$0.67	16.64%	708	17.10%	\$476
11/08/99	4,877	2,966	\$0.61	Nov-02	3,483	\$2,354	\$0.68	28.58%	1,394	31.76%	\$942
12/08/98	6,802	3,791	\$0.56	Dec-02	4,620	\$3,156	\$0.68	32.08%	2,182	39.32%	\$1,491
<b>Totals</b>	<b>69,318</b>	<b>\$38,850</b>	<b>\$0.56</b>		<b>53,031</b>	<b>\$33,129</b>	<b>\$0.62</b>	<b>23.87%</b>	<b>16,287</b>	<b>26.98%</b>	<b>\$10,454</b>

### THERMS

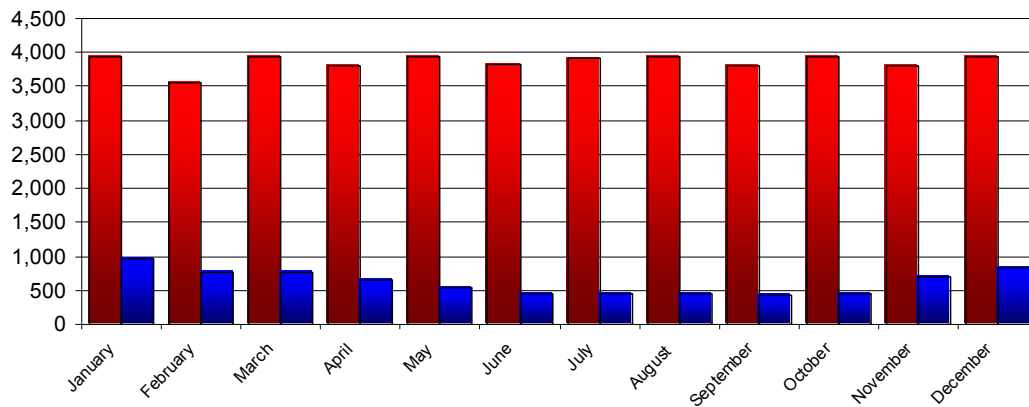


## Electrical Savings – All Systems.

The electrical savings are calculated by using the run time totals on the controls and using a cost of \$.20 per kWh. The deferred boiler repairs are calculated at \$25.00 per month per boiler or one third of the \$75.00 recommendation.

<u>Before Improvements</u>				<u>After Improvements</u>				<u>Savings</u>				
Month	kWh	Amount	Rate	Month	kWh	Amount	Rate	%	kWh	Amount	%	Dollars
01/12/99	3,936	\$787.15	\$0.20	Jan 02	975	\$195.01	\$0.20	75.23%	2,961	75.23%		\$592.14
02/09/99	3,555	\$710.98	\$0.20	Feb 02	768	\$153.67	\$0.20	78.39%	2,787	78.39%		\$557.30
03/12/99	3,936	\$787.15	\$0.20	Mar 02	764	\$152.71	\$0.20	80.60%	3,172	80.60%		\$634.44
04/09/99	3,809	\$761.76	\$0.20	Apr 02	658	\$131.58	\$0.20	82.73%	3,151	82.73%		\$630.18
05/11/99	3,936	\$787.15	\$0.20	May 02	538	\$107.56	\$0.20	86.34%	3,398	86.34%		\$679.59
06/10/99	3,834	\$766.84	\$0.20	Jun 02	457	\$91.49	\$0.20	88.07%	3,377	88.07%		\$675.35
07/13/99	3,910	\$782.07	\$0.20	Jul 02	446	\$89.18	\$0.20	88.60%	3,464	88.60%		\$692.90
08/10/99	3,936	\$787.15	\$0.20	Aug 01	456	\$91.11	\$0.20	88.43%	3,480	88.43%		\$696.05
09/09/99	3,809	\$761.76	\$0.20	Sep 01	424	\$84.86	\$0.20	88.86%	3,384	88.86%		\$676.90
10/07/99	3,936	\$787.15	\$0.20	Oct 01	452	\$90.50	\$0.20	88.50%	3,483	88.50%		\$696.65
11/08/99	3,809	\$761.76	\$0.20	Nov 01	692	\$138.34	\$0.20	81.84%	3,117	81.84%		\$623.42
12/08/98	3,936	\$787.15	\$0.20	Dec 01	824	\$164.90	\$0.20	79.05%	3,111	79.05%		\$622.26
<b>Totals</b>	<b>46,340</b>	<b>\$9,268.08</b>	<b>\$0.20</b>		<b>7,454</b>	<b>\$1,490.89</b>	<b>\$0.20</b>		<b>38,886</b>			<b>\$7,777.19</b>

KWH



### **About Pro-Temp**

For more than 10 years, Pro-Temp controllers have been saving money at thousands of locations. Hotels, universities, office buildings, military installations, apartments, dormitories, and nursing homes are some of the types of properties already online with Pro-Temp. These energy efficient controllers begin saving you money on the first day of operation by automatically matching hot water temperature to demand. The controller continuously monitors daily hot water usage patterns and tells your water heater precisely when to raise and lower temperatures. Now you can eliminate those long hours of wasted energy and costly stand-by heat loss. With the Pro-Temp on-line, your fuel bills will be slashed. Every Pro-Temp controller is backed by an outstanding one year warranty.

### **About Equity Thru Energy - ETE**

ETE's mission is to be the best in the world at Energy Management Services by utilizing state of the art technology along with the top technicians in their field. They provide the Energy Recon System, a state-of-the-art energy management program, which substantially reduces domestic hot water and heating costs for apartment, condominium, motel, hotel and high rise buildings by reducing natural gas, electric and repair costs. ETE – We Energize Your Bottom Line.

#####

### **For more information**

Pro-Temp Controls  
3310 W MacArthur Blvd  
Santa Ana, Ca 92704  
(714) 327-1857 ext 202  
(714) 327-1859 fax

Equity Thru Energy  
1315 N Tustin Ave, Suite 381  
Orange CA 92867  
(714) 518-2446  
(714) 518-2445 fax